

550
(773)
4
v.1



LIBRARY
OF THE
UNIVERSITY
OF ILLINOIS

550.5

FI

v.1

cop. 2

REMOTE STORAGE





FRONTISPIECE.

THE CAMBRIDGE MUSEUM

PREPARED BY

ALFRED R. SHERMAN

VOL. I. PLATE II

METEORITE STUDIES—I

OF

THE CAMBRIDGE MUSEUM

EXPLANATION OF PLATE XLIII.

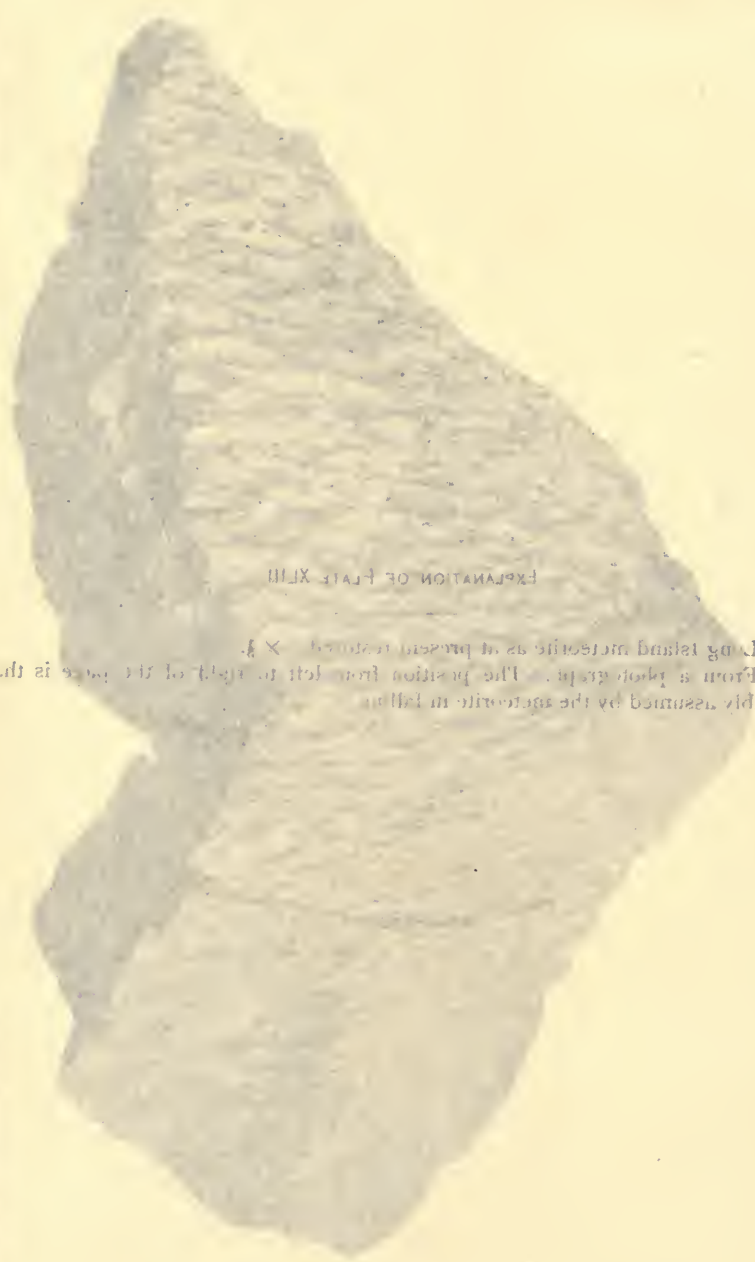
Long Island meteorite as at present restored. $\times \frac{1}{2}$.

From a photograph. The position from left to right of the page is that probably assumed by the meteorite in falling.



Cambridge, U. S. A.

1894



EXPLANATION OF PLATE XLIII

Long island meteorite as it presented itself. X 4.
From a photograph. The position from left to right of the rock is that
probably assumed by the meteorite in fall.

FIELD COLUMBIAN MUSEUM

PUBLICATION 64.

GEOLOGICAL SERIES.

VOL. I, NO. II.

METEORITE STUDIES—I.

BY

OLIVER CUMMINGS FARRINGTON, Ph.D.

Curator, Department of Geology.



CHICAGO, U. S. A.

May, 1902.

METEORITE STUDIES—I.

BY OLIVER CUMMINGS FARRINGTON.

LONG ISLAND, PHILLIPS COUNTY, KANSAS.

MUSEUM NUMBER Me. 420.

Nearly all of this great meteorite is possessed by the Museum and this has been the case since the opening of the institution in June, 1894, but it has never been fully described. A few lines were devoted to the meteorite and a cut of it shown in the catalogue of the meteorite collection published in August, 1895.* A petrographic description from fragments of the stone was also given by E. Weinschenk in 1895.†

No account of the finding of the stone seems ever to have been published however and there are many other features which are well worthy of description. For details regarding the occurrence of the stone I am indebted to Prof. Williston of the University of Kansas and Prof. Willard of the Kansas Agricultural College. Prof. Williston states that a fragment of the meteorite first reached him in the fall of 1892. Prof. Willard secured one at about the same time. On recognizing the meteoritic nature of the fragments sent them, Profs. Williston and Willard at once entered upon negotiations for the purchase of the mass and soon became its possessors. The work of collecting the pieces at the original locality was done by Prof. Willard, and to him I am indebted for information regarding the occurrence there.

The meteorite lay, he states, on a slope of the ordinary soil of the upland prairie region. There is no outcrop of rock in the immediate vicinity and none within several miles, so far as he knows. Where there is an outcrop the rock is limestone. The distribution of the pieces of the meteorite as first seen by Prof. Willard was such as to indicate that the mass had struck upon the slope and its front portion being stopped, the rear portion had broken up and gone ahead. The four large pieces which are put together to make the mass shown in

* Field Columbian Museum Publication 3, p. 59.

† Tsch. Min. u. Petr. Mitth., Vol. 14, p. 471.

Plate XLIII (Frontispiece) were together and in contact at the upper end of the fall. The top of these projected about four inches above the soil and the lowest point to which they reached was perhaps two feet below the surface. Beside these large pieces a quantity of smaller fragments more or less imbedded in the ground extended down the slope in a northwest direction for a distance of from 15 to 20 feet in a gourd-shaped area which was perhaps six feet wide at the widest point. The accompanying section and plan (Fig. 1) from a sketch by Prof. Willard will give an approximate idea of the manner in which the fragments lay. The location of the spot where the meteorite was found is about three miles west of the present town of Long Island,

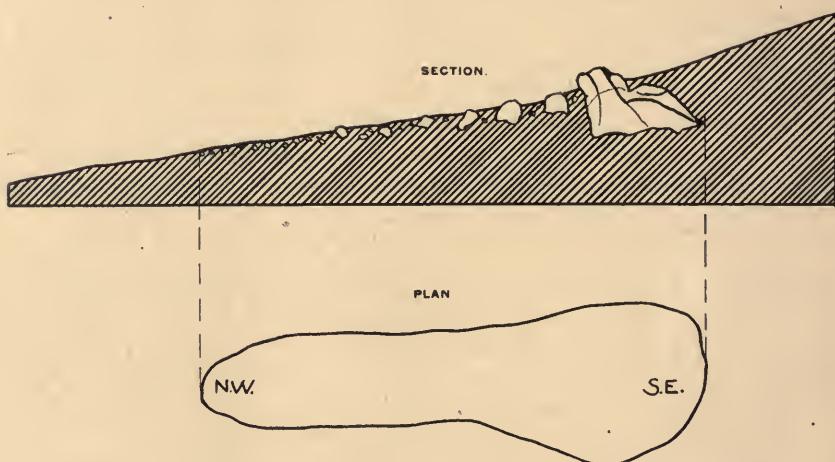


FIG. 1. Section and plan showing nature of occurrence in place of the Long Island meteorite.

one-half mile east of the west line of Phillips County and three miles south of the Kansas-Nebraska State line. It is from the neighboring town of Long Island that the meteorite takes its name. With regard to the time of the fall no knowledge has yet been obtained. The stone was noticed by early comers to the region and was generally reputed to be a meteorite, so that visitors had in many cases taken away pieces as curiosities. That the mass had lain a number of years in place is proved by the coating of carbonate of lime, in some places two or three millimeters in thickness, which encrusts many of the pieces. Further evidence of the long exposure of the stone is given by the weathered character and rusty brown color of the surface of exposed fragments of the stone in contrast to the dark green color of their interior. The meteorite as collected by Prof. Willard was

shortly afterward purchased by Mr. George F. Kunz, of New York City, and after remaining in his possession for about a year was secured for this Museum.

The entire weight of the meteorite as received at the Museum and made up of 4 large and 2,930 small fragments, was 1,184 pounds (537 kilos). This was supposed at the time to be the entire weight of the mass, but a year or two later Mr. Kunz obtained about 60 pounds (27 kilos) more, which is for the most part still in his possession. This additional material was chiefly fragments obtained from people in the region who had carried off portions of the stone for curiosities. A weight of at least 1,244 pounds (564 kilos) can therefore be positively assigned the stone and there is little doubt that it originally weighed somewhat more than this since some pieces were probably carried off that will never be recovered. That the fragments all belonged to a single mass the manner of their occurrence in place leaves no doubt. Moreover their edges show no rounding or fusing as would have been the case had any of them made an independent passage through any considerable part of the earth's atmosphere. The stone is therefore much the largest single stone meteorite known to exist, its nearest competitors being the Bjurböle meteorite, which weighs 748 pounds (340 kilos) and one of the stones of the Knyahinya fall, which weighs 649 pounds (295 kilos).

As soon as the installation of the stone was undertaken at the Museum, it was at once seen that the four large pieces fitted together. When this was done the form shown in Plate XLIII (Frontispiece) was produced. Doubtless others of the fragments could be added to these, but as an effort to do this proved on trial to be likely to consume considerable time without giving any important results, the attempt was abandoned. There would be more hope of success if the Museum possessed the entire mass of the stone, but as it is, many of the fragments would be missing at best. The four large pieces weigh together 669 pounds (303 kilos), or more than half the weight of the stone. They hence probably give its essential form. Their weights are 269, 239, $89\frac{1}{2}$ and $71\frac{1}{2}$ pounds (122, 108, 46 and 32 kilos) respectively. The largest of the remaining fragments at the Museum weighs $22\frac{1}{4}$ pounds (10 kilos), which is a weight much below that of the smallest of the four large ones. Mr. Kunz informs me that one of the fragments in his possession weighs about 35 pounds (15.8 kilos). The smaller fragments range from the weight above mentioned to those not over a gram in weight. Some have the true meteorite crust on one surface, showing that they are from the superficial portion of the stone, while the rough, irregular surfaces of the remaining frag-

ments show that they were wholly within the interior. The portion of the stone to which these fragments would be attached if a complete restoration of its form could be made would be that to the rear and to the left of the part shown in Plate XLIII (Frontispiece) or to the rear of the stone in the position in which it is shown in Fig. 1, Plate XLIV. As will be seen by referring to Plate XLIII (Frontispiece) the portion of the stone to the right of a vertical line drawn through the middle of the plate has an almost wholly natural surface. Over this portion therefore the actual form of the stone is preserved. The form of the stone as at present restored is, as shown by the plate, roughly that of a low cone. The greatest diameter of the base of the cone is 34 inches (86 cm.) and the altitude from base to apex 20 inches (51 cm.) The conical form, as is well known, is the typical one to which meteorites are reduced in their passage through the atmosphere, from the fact that the portion of the mass in front receiving the brunt of the friction and heat is worn down rapidly to an apex from which the other portions slope away. That this is the position which the Long Island stone took in falling is further indicated by the smooth, unpitted character of the base of the cone (*Rückseite*) as compared with the pitted surface of the conical portion, and further by the fact that the series of pittings (*piezoglypten*) on the surface extend in radial directions from the apex of the cone. It will be noted in the plate that the long axes of the pits run in directions nearly parallel to lines drawn from the apex to the base of the cone. These then were the directions of the air currents. The planes along which the four large fragments were separated and along which they have now been joined together are not courses of ordinary irregular fracture, but are definite divisive planes. There are three of these planes, two being continuous each in its own direction while the third may be described as made up of two planes meeting at a very broad angle (160°). The planes run in three directions nearly at right angles to each other. They meet, but only at one point do they pass through one another. If one will conceive of an apple cut in halves by a plane starting a little to one side of the bloom, one of these halves then cut through equatorially in a direction at right angles to the first plane by two planes starting a little above the equator, but meeting at it, then the quarter nearest the bloom cut through by a plane at right angles to the equatorial plane in a direction running from the bloom to the stem, and passing into the otherwise uncut half for quite a distance, an idea will be gained of the course of the division planes of this meteorite. Their course can also be seen by reference to Plate XLIV.

The area of each plane is approximately as follows:

Plane A = 200 sq. in. (13 sq. dm.)

Plane B = 196 sq. in. (12 sq. dm.)

Plane C = 113 sq. in. (7.1 sq. dm.)

The position of these planes makes it unlikely that they were developed by the blow of the meteorite in striking the earth, for one at least runs nearly at right angles to the probable direction of



FIG. 2. Slickensided surface of Long Island meteorite. $\times 1$.

motion of the meteorite. Further, as stated more in detail below, the striæ of the slickensided surfaces run in different directions.

The plane marked (A) in Fig. 2, Plate XLIV, runs quite nearly in the direction of probable motion and it is interesting to note that near each end of the meteorite irregular cracks appear which are approximately parallel to this plane. Their position suggests that they may have been produced by the tendency of the base of the meteorite to continue its motion after the apex had been stopped by striking the earth. The plane marked (C) separating Pieces 2 and 4 can be noted continuing on in Piece 1 as a line which extends nearly

to the edge of that piece. This portion of the plane evidently was not sufficiently developed as a division plane to produce disruption of the piece when the meteorite struck the earth.

That the three planes described represent a structure which existed in the meteorite before its entry into the earth's atmosphere there can be little doubt. They are too regular to make it possible to consider them planes arising from fracture by shock and there are several other lines of evidence pointing to their preterrestrial existence. The most important of these is that their surfaces are slickensided. The slickensided character of the surface resembles that seen in terrestrial rocks and is illustrated in Fig. 2. It is a smooth, shining, somewhat undulatory, like a *roche moutonnée* surface, and bears short striæ which on the same surface run in one general direction, but take different directions on the three several planes. These several directions are indicated in Plate XLIV, Fig. 2, where one of the fragments is represented as removed. The color of the slickensided surfaces is somewhat darker than that of the crust of the meteorite, but there is no evidence of special heat having been developed by the force which produced the slickensides. This I have tested by cutting sections at right angles to the surfaces. The outlines of the individual grains were found to be sharp and unaltered up to the slickensided edge.

Since slickensided surfaces on terrestrial rocks are so far as known produced by slow differential movement in the mass under considerable pressure and while in the solid state, they may in the absence of any evidence to the contrary be assigned to the same cause in this meteorite. The conclusion seems fair therefore that these planes and surfaces were formed during the preterrestrial existence of the mass and that the mass must have been solid in its nature while in space. The three planes which I have described seem to me to resemble the joint planes of terrestrial rocks more than anything else I can think of and give us grounds for asserting the existence of joint structure in the rocks of space. I do not know that well marked joint structure has been observed in any other meteorites except that noted by Meunier in one of the stones of L'Aigle*. This stone he regarded as possessing a joint fissure, but it was not as well developed as the planes of the Long Island stone.

If the occurrence of joint structure in the Long Island stone is deemed proved, it is significant as pointing to a considerable mass possessed by the body in space. Joint blocks of such size as this would not be likely to be developed in a small body.

*Fremy's Encyc. Chimique, Tome II., Meteorites, p. 457.



EXPLANATION OF PLATE XLIV.

Fig. 1. Drawing of restored portion of Long Island meteorite to show position and number of dividing (joint) planes. The position of the meteorite is as it had been rotated upward from that shown in Plate XLIII, bringing the apex of the cone to the front.

Fig. 2. Drawing of restored portion of Long Island meteorite in slightly different position and with Fig. 1 removed, to show position of its dividing (joint) planes.





FIG. 1.

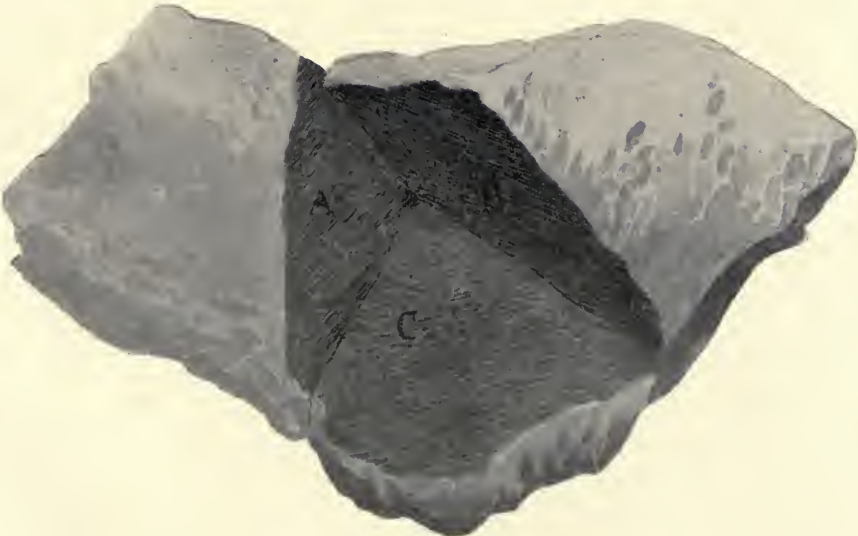


FIG 2.

LIBRARY
UNIVERSITY OF ILLINOIS
URBANA

The natural surface of the more conical part (*Brustseite*) of the meteorite as it is at present joined together, is for the most part deeply pitted with characteristic meteoritic thumb-marks (*piezoglypten*). These pits vary considerably, as would be expected, in form and size, but still exhibit a certain uniformity. The majority have the form of an elongated ellipse whose major axis is about twice the length of its minor. The following dimensions may be considered as representing a fair average of the size of the pits: Major axis, 3.2 cm. ($1\frac{1}{4}$ in.) Minor axis, 1.5 cm. ($\frac{5}{8}$ in.) Depth, 3 to 10 mm. ($\frac{1}{8}$ to $\frac{3}{8}$ in.) The depression of each pit generally slopes uniformly toward the center of the ellipse, but often there are to be found pits, the deepest point of which is quite eccentrically placed and which have a more or less conical shape. Some pits have a nearly circular outline as contrasted with the more common ellipsoidal one. These circular pits are usually of small size, but one of large size and unusual depth is to be found at the point in the meteorite where the two planes A and C cut each other. This pit has for the most part the shape of a deep regular bowl, although the regularity of one portion is broken by two smaller conical pits. The depth of this pit is 3.2 cm. ($1\frac{1}{4}$ in.) and its diameter 6.4 cm. ($2\frac{1}{2}$ in.) The point of junction of the planes is almost exactly at the center of the pit. It is evident that this was a point of weakness in the stone at which the erosive action of heat and friction produced during the passage of the mass through the atmosphere worked more rapidly than on other parts of the surface. Its occurrence at the point of junction of the planes is pretty good evidence that the latter existed in the stone previous to its entry into the atmosphere. This fact has also a bearing on the disputed question as to the origin of the pits in general. It shows that they owe their origin chiefly to an excavation by heat and pressure of the softer or more friable parts of the surface of the mass which is acted upon. Wherever there is a point of weakness there a pit will be formed. Vice versa, where a pit is formed, there was a point of weakness.

The rear side (*Rückseite*) of the stone is not pitted. It has a well developed crust, but the encrusted surface exhibits no marked depressions or elevations. The only portion of the meteorite as now restored which illustrates the *Rückseite* is that appearing in the upper right hand part of Plate XLIII (Frontispiece). Here the surface is slightly undulating, but there are no pits.

The color of the crust of the meteorite is in general dark brown, but varies from almost black to light brown. At a little distance it appears perfectly smooth and in places shining, but on close examination it is seen to be quite uniformly and coarsely stippled by the pro-

trusion of the more resistant grains. In many places, especially in the vicinity of the pits, minute thread-like markings appear over the surface, sometimes in parallel and concentric series, but more commonly in arborescent forms which are often quite elaborate. These series or systems of markings do not appear to run in any common direction, but are differently oriented wherever found. I have noted no system more than one inch (2.5 cm.) in length, but several of about this extent. They resemble closely the lines of flow such as have been noted on the crust of the Stannern and other meteorites, and doubtless are of this nature, being formed by a minute portion of the substance of the meteorite becoming momentarily fused and flowing in a diversified path until cooled. Their course in some cases seems to mark the swirling of the same air currents which formed the pits. More extensive and larger ridges are to be observed over some portions of the crust. Three nearly parallel appear on the portion of the *Rückseite* just mentioned. Each is continuous for a length of from 3 to 5 inches. These do not appear to be of the nature of the lines of flow above mentioned, but more nearly resemble the veins which stand out on some meteorites and probably mark a line of more highly resistant constituents. Sections cut at right angles to the crust and examined with the microscope exhibit little if any alteration on the crust surface. The mineral outlines seem to be continued sharply up to the edge, and except for a certain smoothness of contour a crust surface could not be distinguished microscopically from the surface of an interior portion. Occasionally a metallic grain protrudes from the general outline, but so far as the contour as a whole is concerned it appears to be the result of erosion rather than of fusion.

The weathering which the mass has undergone since its advent upon the earth has affected it considerably. Even the larger fragments when broken open will be found to be deeply invaded by rust which has penetrated along cracks in every direction. Doubtless the great number of small fragments into which the stone was found to be broken when first discovered was due to this process of separation through weathering rather than to shattering caused by the blow of the mass upon the earth. The weathering has affected chiefly the metallic constituents of the stone, causing their oxidation, and this rust has penetrated and stained the meteorite deeply. The color of the weathered surfaces has thus been changed from the dark green of the unaltered rock to various shades of brown, a characteristic color being a light yellowish brown, almost white, spotted with dark or rust brown.

The depth to which this discoloration has extended, except where

it has followed cracks and fissures, is usually scarcely a millimeter, the color changing beyond this through reddish to black before the dark green of the unstained stone is seen.

Over a large part of the surface of the stone as found appeared a white amorphous coating which adhered very firmly. It could be removed by treatment with weak acid and most of it has been taken off in this way since the arrival of the stone at the Museum. When its substance is examined chemically it is found to be carbonate of lime containing a small percentage of clay. There can be little doubt that this coating is derived from the calcareous soil in which the stone lay for an unknown period, the carbonate of lime from the soil doubtless spreading over the meteorite surfaces through capillary attraction and cementing upon the stone some of the surrounding clay. In some cavities of the stone a much greater proportion of soil is held, and at many points the cementing agent is iron oxide, derived doubtless from the oxidation of the metallic grains of the meteorite.

The unaltered stone when exposed by fresh fracture is of a dark green color, varying to black, although the latter shade may be due to staining from terrestrial oxidation. The stone is fine-grained, tough and compact. Occasional portions exhibit a slight porosity, giving a slag-like appearance. Such areas are however small and the pores of small size. The proportion of metallic ingredients is not large but they are quite uniformly distributed.

The metallic grains show most plainly on a polished surface, the distribution and quantity being illustrated in Fig. 3. Occasionally well-marked aggregations of these may be seen. None of the surfaces that I have examined show arrangement of the grains in lines or systems of lines such as have been noted in a number of stone meteorites by Reichenbach* and Newton†. The largest metallic grain I have seen in the Long Island meteorite has a diameter of 1.5 mm. From this size all gradations may be found down to the minutest grains, examination with a lens bringing out many not visible to the naked eye.

The bronze-yellow color and comparative softness of many of the grains as exhibited on a polished surface mark them as troilite, in contrast to the silver-white color and greater hardness of those composed of nickel-iron. Further identification of the grains can be obtained by isolating them or by treating a polished surface of the meteorite with copper sulphate. On the polished surfaces examined the number of troilite grains is evidently much in excess of those of nickel-iron.

*Ueber das Gefüge der Steinmeteoriten. Poggendorff's Annalen 1859, vol. 108, pp. 291-311.

†Amer. Jour. of Science, 1893, 3rd ser., vol. 45, pp. 152-3.

As individual grains they are, however, smaller in size. Often the nickel-iron and troilite can be seen to be intergrown in a single grain.

Before the blowpipe a fragment of the rock fuses even in the oxidizing flame with a fusibility of about 4.5, the entire fragment blackening from the formation doubtless of FeO. In the reducing flame the fusibility is, as would be expected, greater on account of a more rapid formation of FeO. Evidently the mixture of minerals forms an



FIG. 3. Polished surface of Long Island meteorite showing size and distribution of metallic grains. Fully half of these are troilite. The light irregular lines mark the position of fractures of no significance. X ♡.

aggregate fusible at a lower temperature than any of its components, for the component minerals are practically infusible.

The specific gravity of the stone, determined as an average of three separate portions weighing 50, 18 and 7 grams respectively, is 3.45.

As previously stated, a description of the petrographic characters of the stone has been made by Weinschenk*, and as it seems desirable to collect here all the important literature bearing on the meteorite, a translation of Weinschenk's article follows:

“From the Long Island, Phillips County, Kansas, occurrence I

**Loc. cit.*

have at my disposal four pieces, amounting in weight to 20–30 grams. They possess a rusty weathered surface. Many hundred similar pieces were found (in part with crust), having a total weight of 1,184 pounds. The meteorite of Long Island is a compact, dark stone, which appears dark green on fresh fracture and shows numerous metallic specks. The crystalline structure is megascopically visible; there are numerous shining cleavage surfaces and the meteorite resembles the fine-grained harzburgite from Riddles, Oregon. Chondri are only now and then to be seen. Under the microscope it is clearly seen that chrysolite and bronzite are the characteristic ingredients. The structure as well as the relations in quantity of the two constituents are very variable, the chrysolite now being in excess and now again the pyroxene, and the general porphyritic structure passes commonly enough over to a purely granular one. Chondrus-like forms are found throughout, but they are seldom developed in an especially characteristic way. Ragged particles of metallic iron, numerous grains of iron sulphide (troilite?) and chromite complete its composition. The chrysolite occurs generally in porphyritic, more or less idiomorphic crystals, and in fragments. In the fresh condition it is colorless, but on slight heating it becomes reddish brown and pleochroic, and at red heat completely opaque, indicating a high content of iron. The cleavage of the mineral is always clearly developed, and this shows in many cases undulatory extinction. It is very rich in inclusions, generally appearing as dark-brown rounded forms which often show regular arrangement. In the weathered portions there occurs beside iron hydroxide, a serpentine-like substance as an alteration product of the chrysolite. The orthorhombic pyroxene is likewise colorless and transparent and may be classed as bronzite. It tends to form groups of larger individuals where the stone has granular structure; in smaller crystals it occurs also as a constituent of the ground mass in the porphyritic forms. Its distribution in the stone can best be seen if a section is treated with hydrochloric acid. This dissolves out the chrysolite but leaves the pyroxene unattacked. In sections so treated it can especially well be seen that the bronzite where it occurs as a constituent of the ground mass often exhibits skeleton growths which lie imbedded in a colorless substance and are not attacked by hydrochloric acid. This has weak refraction and between crossed nicols shows irregular illumination so that it is not improbable that it is a glassy substance possessing optical anomalies through strains. Rarely, besides the orthorhombic pyroxene there is to be seen a monoclinic augite in single grains, with the properties of diallage. The solid iron occurs in angular particles and often in

zonal growths with chromite which also occurs alone, widely distributed in the stone. The little grains of the latter mineral appear brown, translucent. Also pyrrhotite (*magnetkies*) is present in considerable quantity and generally in large individuals. The structure of the whole stone indicates a cooling from a fused liquid, a view also supported by the porphyritic crystals of chrysolite and the skeletons of bronzite in the colorless base. There is no trace of breccia structure and the occurrence of few well-defined chondri gives no further proof. As has been often observed in meteorites, the whole stone has much more the character of a suddenly cooled mass, a character which is also indicated by the undulatory extinction of the chrysolite, the skeleton growths of pyroxene and the sudden variations in composition. The Long Island meteorite in mineralogical characters belongs to the harzburgites. If among terrestrial rocks we look for masses which in a structural and mineralogical way can be compared to the Long Island meteorite, it will be found that the number is a very limited one for the reason that rocks of similar composition have suffered in most cases much decomposition, by which their structure becomes indeterminable. But at all events it seems probable from the few observations on, for example, the terrestrial basalts of Greenland, that similar structures as they are here observed and in many other meteorites are formations characteristic of cooled rocks in which silicate of magnesia plays an important part, and that no grounds are given for the belief that formations of this kind in any of the terrestrial rocks have originated in any different way."

To the observations of Weinschenk there is little of importance to be added. The crystalline structure is perhaps hardly as prominent megascopically as one would judge from Weinschenk's account, while the chondritic structure is easily recognized in all the sections I have examined. There are numerous polysomatic porphyritic chrysolite chondri and typical fibrous ones of enstatite. One of the latter observed was 2.5 mm. in diameter and it is evidently not cut through its center. A black, seemingly carbonaceous matter, borders its outer edge. The fibers are minute and lie in parallel groups extending in various directions. A porphyritic chrysolite chondrus seen had a diameter of 1.25 mm., a single grain reaching the size of .025 mm. Another monosomatic chrysolite chondrus seen was made up of chrysolite porphyritically developed in glass and with a distinct circular border of chrysolite all extinguishing simultaneously. This chondrus also contained a large grain of troilite. The crystal outlines of the chrysolite individuals whether developed in the chondri or out are often well defined, the predominant habit being short stout crystals

bounded chiefly by pinacoids. The chromite more often has a red tone than the brown described by Weinschenk, its deep red grains being frequently seen in the sections. Both nickel-iron and troilite grains sometimes enclose small siliceous particles of what is probably chrysolite, indicating the latter to be the earlier formation.

As regards classification, the Long Island meteorite is classed by Wülfing as a crystalline spherical chondrite, Cck.* Beaver Creek, Bethlehem, Lumpkin, Menow, Prairie Dog Creek, Richmond and Savtschenskoje are other meteorites included in the same class.

Brezina classifies Long Island as a crystalline chondrite Ck.,† in which group are included Erleben, Klein-Wenden, Kernouve and many others. By Meunier, Long Island is put in Class 34, Erlebenite, which includes monogenic meteorites of fine grain made up chiefly of chrysolite and bronzite and containing visible grains of nickel-iron. Bluff, Erleben, Kernouve, Klein-Wenden, Menow and Pipe Creek are among the other meteorites brought by Meunier into this class. Thus the place of Long Island in classification seems to be quite generally agreed upon. Differences can, of course, be noted from other meteorites with which it is classed, it being, for instance, more compact and of finer grain than Beaver Creek and containing much less nickel-iron than Pipe Creek.

Of its well-marked crystalline character, however, there can be no doubt, nor, to my mind, of its monogenic origin.

Absorption by a siliceous magma, of iron in preference to nickel, seems to me to afford a reasonable explanation of the high percentage of nickel in the metallic portion of the stone shown in the following analysis. Such a high percentage of nickel in the nickel-iron of stone as compared with iron meteorites is common and must be of some significance. If the meteorite is simply tuffaceous in origin, one would expect the nickel-iron to have the composition of that of the iron meteorites uninfluenced by the accompanying silicates, but such is not the case.

Again, the outlines of the crystal individuals in the Long Island meteorite are sharply and fully developed and are in stable and magmatic position with reference to each other. Some of them are larger than the individual chondri and yet exhibit no sign of wear or fracture. Accordingly the believers in the tuffaceous character of all stone meteorites would find, I think, little to support their views in an examination of this stone. I can see no indications in its structure of any other origin than one of cooling in place from a fused magma,

*Die Meteoriten in Sammlungen, Tübingen, 1897, p. 453.

†Die Meteoriten Sammlung des K.K. Naturhistorische Hofmuseums, Wien, 1895, p. 353.

and this applies to the chondri as well as to every other part of the stone. In this view I agree fully with Weinschenk as quoted above.

An analysis of the meteorite was made by Mr. H. W. Nichols, Assistant Curator of the Department, in the laboratory of the Department.

For this analysis a fragment of the meteorite free from visible oxidation was pulverized and dried at 100° C.

A portion of 3.3863 grams was weighed out for the major part of the analysis, experiment having shown that better results could be obtained from portions of this size than from a larger portion of about 16 grams. The nickel-iron was separated by Eggertz's method of solution in iodine, the stone being found to be of too compact a nature to admit of magnetic separation even if the iodine method is not to be preferred in any case. The siliceous portion remaining was separated into two parts in the usual manner by treatment with dilute hydrochloric acid and potash. The separated portions were not weighed as it was found that sufficient oxidation occurred while burning off the filter to vitiate the results, but were analyzed separately and their weights calculated from the analyses. The insoluble portion was fused with sodium carbonate and a small amount of nitre. Silica was determined after the common method. Nickel and cobalt were separated from the iron by three precipitations and long digestion with ammonia and a large excess of ammonium chloride. Cobalt was separated from nickel by potassium nitrite. Nickel was titrated with KCN and cobalt weighed as sulphate. Magnesium was weighed as pyrophosphate and calcium as oxide after an oxalate precipitation in the usual manner. Chromium was weighed as lead chromate after oxidation by bromine in acetic acid solution. Phosphorus was separated by the acetate process and weighed as molybdate. Water above 100°C. was determined in a separate portion by Penfield's method of direct weight. Sulphur was determined in a separate portion as barium sulphate. Iron and insoluble alumina were determined in a separate portion, the iron being titrated by permanganate. The alumina was weighed directly, that of the soluble portion as alumina, that of the insoluble portion as phosphate. The alkalis were determined in a separate portion after separation by platinic chloride as usual. They were found to occur wholly in the insoluble portion. TiO_2 was present in distinct although unweighable quantities. A precipitate of ammonium manganese phosphate also proved to be not quite large enough to weigh. A search for copper gave only a very faint brownish coloration with hydrogen sulphide which was not sufficient to verify.

The analysis gave the following results:

	Metallic.	Sol. in HCl.	Insoluble.	Total.
SiO ₂	9.11	26.54	35.65
Al ₂ O ₃	1.64	1.44	3.08
FeO	17.19	5.66	22.85
MgO	8.99	13.75	22.74
CaO	0.02	1.38	1.40
Na ₂ O	0.00	0.25	0.25
K ₂ O	0.00	0.03	0.03
H ₂ O above 100°	1.52	1.52
TiO ₂	Tr.	Tr.
P	0.036	0.024	0.060
S	1.900	1.900
Cr ₂ O ₃	0.34	5.99	6.33
NiO	0.089	0.68	0.769
CoO	0.013	0.047	0.060
MnO	Tr.	Tr.
Fe	2.60	2.60
Ni	0.67	0.67
Co	0.036	0.036
O for Limonite	0.90	0.90
	3.31	41.75	55.79	100.85
Less O=S	0.95	0.95
Less O=P	0.06	0.04	0.10
	3.31	40.74	55.75	99.80

The most striking feature of the composition revealed by this analysis is the high percentage of Cr₂O₃. I know of no other meteorite which shows so high a percentage, more than 1 per cent. being rare. Most of this was found in the insoluble portion and may hence be referred to chromite, especially as examination of sections with the microscope shows a large quantity of the red translucent grains which indicate that mineral. It may be worthy of remark, however, that the chromium mineral of the meteorite was more easily decomposed than ordinary chromite. Although left as an insoluble residue after fusion with sodium carbonate, it went into solution on treatment with sulphuric acid without requiring a separate fusion with acid sulphate of potash. The percentage of Cr₂O₃ noted in the soluble portion of the meteorite may probably be regarded as a constituent of the chrysolite, although its quantity here is above the average.

The quantity of Al₂O₃, shown in the soluble portion of the above analysis, is unusually high and is difficult to account for.

although it has not infrequently been reported by other analysts as a constituent of the soluble portion of meteorites.

Grouping the compounds of the above analysis which are known to enter into the composition of nickel-iron, chrysolite and bronzite, the following may be deduced as the probable composition of these three ingredients:

COMPOSITION OF NICKEL-IRON.										Per Cent.
Fe	78.65
Ni.	20.26
Co.	1.09
										100.00

COMPOSITION OF SOLUBLE SILICATES (CHIEFLY CHRYSOLITE).										Per Cent.
SiO ₂	36.88
MgO	36.40
FeO	18.62
Al ₂ O ₃	6.64
Cr ₂ O ₃	1.38
CaO	0.08
										100.00

Ratio of 2RO:SiO₂ : : 1.9997 : 1.

COMPOSITION OF INSOLUBLE SILICATES (CHIEFLY BRONZITE AND MONOCLINIC PYROXENES).

										Per Cent.
SiO ₂	56.52
Al ₂ O ₃	3.07
FeO	6.05
MgO	29.28
CaO	2.94
CoO	0.10
NiO	1.45
Na ₂ O	0.53
K ₂ O	0.06
										100.00

Ratio of RO : SiO₂ : : 1:1.0148.

To place the alkalis in the pyroxenes, as is here done, is contrary to the usual custom, it being common to assume that they are present as feldspars. But as no feldspars could be detected in the slides and as alkalis are known to enter into the composition of pyroxenes in small amount, the conclusion here adopted seems the more reasonable one. No attempt was made to differentiate the two pyroxenes chemically, as I know of no guide for this. The amount of monoclinic pyroxene which can be seen in sections is very small,

so that the above can practically be regarded as bronzite. It may seriously be questioned, however, whether digestion in hydrochloric acid can be relied upon to wholly separate the chrysolite and bronzite, for with longer digestion some of the bronzite is apt to go into solution, or, with shorter treatment, some of the chrysolite may not be decomposed. Further investigation of this subject should be made.

Taking all the probable ingredient minerals of the rock into consideration, the following is perhaps the best estimate that can at present be made as to its probable composition:

	Per Cent
Bronzite and Monoclinic Pyroxenes	47.05
Chrysolite	24.74
Limonite	10.50
Chromite	8.83
Troilite	5.24
Schreibersite	0.23
Nickel-Iron	3.31
Oxides of Cobalt and Nickel	0.10
	<u>100.00</u>

Here the limonite is probably of secondary or terrestrial origin and should perhaps be divided up about equally between the nickel-iron and troilite in estimating the pre-terrestrial composition of the rock. The composition as shown above of about one-half bronzite accords well with what one can observe after treating a section with hydrochloric acid so as to dissolve out the chrysolite, for an extensive framework made up of bronzite then remains. The high percentage of chromite indicated by the analysis is also in accordance with observations made with the microscope.

The resemblance of the meteorite to terrestrial peridotites is, as noted by Weinschenk, very marked, and the constant association both in terrestrial and extra-terrestrial regions of the elements and minerals which compose rocks of this class indicates laws of association which are not yet comprehended.

SUMMARY.

1. The Long Island meteorite is a single isolated fall and fell as a single stone.
2. It is the largest single stone meteorite known.
3. It is traversed by planes resembling joint planes which are pre-terrestrial in their origin.

4. In structure it belongs to the class of crystalline chondrites.
5. In chemical composition it is made up chiefly of oxides of silicon, iron, magnesium and chromium, with small percentages of iron, nickel, sulphur and minor constituents.

6. Its mineralogical composition may be estimated as 47% bronzite and some monoclinic pyroxene, 25% chrysolite, 9% chromite, and the remainder nickel-iron, troilite and schreibersite or alteration products of these. The content of chromite is remarkable and the highest yet reported in meteorites.

NESS COUNTY, KANSAS.

MUSEUM No. Me. 490.

Of this fall the Museum possesses one small complete individual having a weight of 85 grams. This aerolite in general form is wedge-shaped with angles but little rounded. Except for one fractured surface it is covered with a black crust or one which was undoubtedly originally all black, but through weathering has taken on in places a rusty brown appearance. The crusted surface is smooth but uneven, the irregularities suggesting pitting, although the depressions are not deep enough to produce pits of definite form. On making a section through the stone and polishing the surface thus exposed, the crust appears as a distinct black border having a thickness of about $\frac{1}{4}$ mm., in contrast to the dark brown color of the interior of the stone. In texture the crust does not differ noticeably from the interior, the porosity of many meteorite crusts not being in evidence. The dark brown color of the interior of the stone is doubtless largely a discoloration due to weathering. So completely has this discoloration penetrated the stone that it is impossible to find a place where the probable original color remains. The discoloration also makes it impossible to make out much regarding the structure of the stone megascopically, chondri not being visible on a polished surface. Metallic grains are numerous over the polished surface. They are for the most part of small size, the largest that I have noticed not being over 1 mm. in diameter. They consist both of nickel-iron and troilite, the grains of the latter being distinguished by their yellow color and by not taking on a deposit of copper when immersed in copper sulphate. These troilite grains are quite as numerous as the grains of nickel-iron, but never as large.

In texture the stone is compact but it is only fairly coherent,

breaking rather easily with a blow of a hammer. The specific gravity of the whole aerolite of 74 grams taken with the balance at 21°C. was found to be 3.504. This value is of course slightly affected by the crust of the stone, but as a fragment without crust weighing 3.4 grams gave the same result the error from this cause must be very small.

Under the microscope the rock is seen to be a crystalline aggregate made up chiefly of grains of chrysolite, bronzite, nickel-iron and troilite. Here and there are traces of a structure which may indicate chondri or fragments of them, but such occurrences are rare. The chondrus-like structures lack definite outline and if of chondritic origin can only be considered fragments. One such fragment seen consists of alternate narrow lamellæ of about equal width, of chrysolite and glass. In another the lamellæ of chrysolite are broader and the mass has a border of chrysolite. Another suggests a portion of a polysomatic chrysolite chondrus. The grain of the stone as a whole is coarse, many of the chrysolite individuals reaching diameters of 0.2 to 0.4 millimeters. These incline to a porphyritic development, although the whole rock is crystalline. The chrysolite individuals are in general considerably seamed and fissured and stained brown from the penetration of iron rust. Where not stained they are colorless except for scattered minute black inclusions which occur in considerable quantity. They occasionally have prismatic outlines but are more often rounded or fragmental. Elongated fibers alternating with glassy or half-glassy lamellæ also occur as previously noted.

A few well-marked aggregations of black, probably carbonaceous matter, occur mixed in a glassy or half-glassy ground mass, the whole having an approximately circular outline, and reaching in one case 0.5 mm. in diameter. Here again a chondritic form is suggested but cannot be positively discerned. The carbonaceous matter is made up of smaller black particles not different from those included in the large chrysolite individuals.

The bronzite usually occurs in the typical fibrous development. It is colorless to yellow, the latter perhaps being due to iron stain.

Quite frequently large grains of an isotropic mineral appear which I cannot yet refer to any species with which I am familiar. The grains are marked by large size and freedom from inclusions and cracks such as characterize the other silicates of the meteorite. One grain seen has 0.7 sq. mm. of surface, another 0.5 sq. mm., while the remainder are smaller. The outline of the grains is irregular and separated from the remaining constituents. Good cleavage is shown in some of the grains and is apparently cubic, although in one individual the planes

meet at angles of 50° . The mineral is colorless inclining to a pink tinge. Relief and index of refraction about like that of chrysolite. I hope to give the mineral further investigation when a larger quantity is available.

The metallic grains (nickel-iron and troilite) have more or less angular outlines and incline toward elongated forms. The nickel-iron and troilite are usually intimately joined, although grains of each mineral also occur alone. The troilite, readily recognized by its bronze yellow color, is more abundant than the nickel-iron.

A few opaque grains of black color closely associated with the nickel-iron and troilite are probably to be referred to chromite. Besides these, translucent grains with the typical red color of chromite are numerous, and one observed has a square outline showing it to be a section either of an octahedral or cubic crystal. The chromite always occurs united to the other opaque minerals. The grains of nickel-iron and troilite often enclose grains of silicates of small size.

On the whole the Ness County meteorite should probably be classed as a crystalline chondrite or Meunier's *erxlebenite*, although its chondritic nature is somewhat doubtful.

As is probably generally known, a number of small aerolites quite similar to the one here described have been found in Ness County. The first of these found was briefly described by Henry L. Ward.* Aside from this description and mention of the stones in one or two catalogues, no further account of them seems to have been published. Since Preston has suggested, however,† that the Ness County stones may belong to the same fall with Kansada, Jerome, Prairie Dog Creek and Long Island, a knowledge of them is desirable as a ground of investigating the suggestion. What additional facts I have been able to gain regarding the Ness County stones in general have been kindly given me by Mr. Henry L. Ward. In all at least twenty-five small aerolites have been found in Ness County, exclusive of Kansada. In weight they range, so far as Mr. Ward has been able to record them, from 34 to 3,467 grams, the total weight being 17,011 grams. This does not represent the entire amount, since of some stones Mr. Ward was unable to obtain exact record, but at least this amount has been found. The majority of these, so far as their place of find has been recorded, have come from the neighborhood of Franklinville, a village about five miles south of Ness City. The first one described by Mr. Ward, however, came from a place nearly twenty miles to the east of Franklinville, the exact locality being

*Amer. Jour. of Science, 4th ser., vol. 7, p. 233.

†Amer. Jour. of Science, 4th ser., vol. 9, p. 112.

given by Mr. Ward as Section 2, Township 20 S., Range 21 W. The village of Wellmanville is not far from this locality and this ærolite may therefore be called the Wellmanville stone.

For investigating Preston's hypothesis two lines of inquiry may be followed; (1) The probable course of the meteor and (2) the constitution and structure of the stones.

(1) The probable course of the meteor: Starting from Franklinville and going in a general northwest direction the Kansada and Jerome stones will be found nearly in the same line at distances of seventeen miles to Kansada and thirteen miles further on to the locality of the Jerome meteorite.* Thirty miles further on in the same line appears the Oakley find. (See Plate XLV.) That a meteor may have moved along this line dropping fragments as it passed is conceivable, although no observed shower has a greater length of distribution than sixteen miles. If these stones are from a single meteor the direction of movement was undoubtedly from southeast to northwest rather than the reverse, since the smaller fragments would undoubtedly fall first.† The Wellmanville stone is somewhat eccentric to this general course but it is quite conceivable that it may have come from the same meteor so far as the latter's course is concerned. This would give a length of distribution of forty-six miles, or, if the Oakley stone is included, of eighty-six miles. The Long Island and Prairie Dog Creek meteorites evidently lie far outside of this course, although the exact location of the Prairie Dog Creek find seems not to be recorded. Brezina gives it‡ as 39°30' N., 99°0' W., on Sappa Creek, Decatur County, Kansas, which is an utterly impossible location. However, Prairie Dog Creek, Decatur County, may be assumed to be its approximate place of find. The Long Island and Prairie Dog Creek locations form then, as shown by Preston, in connection with the Jerome and Ness County stones, a parallelogram 117 miles long by 35 miles broad. This parallelogram extends in a north-northeast direction, a course at about right angles to that which I have just traced. It is

* Dana, as quoted by Washington, states that the Jerome meteorite was found on the Smoky Hill River fifteen miles east of Jerome.—*Amer. Jour. of Science*, 4th ser., vol. 5, p. 447.

† I do not know that attention has been called before to this method of deducing a meteor's course, but it seems evident as a matter of reasoning that the smaller fragments would reach the ground first since the greater momentum possessed by the larger fragments would carry them farther. Meunier is of the opposite opinion (*Meteorites*, p. 424), but as a matter of record in all showers of which I have been able to obtain statistics the larger stones are found at the farther end of the meteor's path. This was the case at New Concord, Orgueil, Lancé and Butsura. For the purpose of gaining further evidence on this point it is quite desirable that observers should in the future note the weight of the stones in connection with their location when picked up after a meteoric fall.

‡ *Die Meteoriten Sammlung*, etc., Wien, May 1895, p. 359.

over this area that Preston suggests a meteoric shower might have extended. But an extension of a shower over an area so large, especially in width, would be quite unprecedented so far as present observations go. It seems to me, therefore, from a consideration of the probable paths, that Long Island and Prairie Dog Creek must be regarded as of separate origin from Ness County, Kansada, Jerome and Oakley, but that the four latter may, if only the paths are taken into consideration, belong to the same fall.

(2) The constitution and structure of the stones: On this point, unfortunately, little evidence is as yet at hand. As Preston remarks, the six finds are megascopically very similar. They are all about equally oxidized and coated with carbonate of lime, indicating that they have lain about the same length of time in the soil, and are all of compact texture and possess about the same quantity of metallic grains except Oakley, which contains much more metal than the others. The crust of the large stones is, however, thin and dark-brown in color while that of the small stones (Ness County) is, except Wellmanville, so far as I am able to learn, thick and black. This would indicate some difference in the character of the stones, but perhaps not sufficient to warrant considering them different falls.

From the point of view of structure, Weinschenk states that Prairie Dog Creek is sharply distinguished from Long Island*, for in Prairie Dog Creek the chondri are very numerous and make up the greater part of the stone, while in Long Island the chondri are obscure and the structure has a marked crystalline character. Taking into consideration, therefore, their distance from the other finds and their differences from each other, there seems to be good reason for regarding Prairie Dog Creek and Long Island as separate single falls. Among the remaining four, Oakley, Jerome, Kansada and Franklinville, to which should perhaps be added Wellmanville as distinguished from Franklinville, Oakley seems on the whole to possess a distinguishing character in its larger quantity of metal. According to Preston's determination it contains 14.44% of metal†, presumably nickel-iron, while the percentage of metal (nickel-iron) in Jerome is, according to Washington†, only 4.25%. Oakley is also of coarser grain and possesses more bronzite than Ness County, as I have been able to learn by comparing microscopic sections.

Through the kindness of Dr. Washington I have also been enabled to compare a section of the Jerome meteorite with sections of Oakley and Ness County. Considerable differences are thus brought to light which make it very improbable that Jerome belongs to either of the

*Tschermak's Min. u. Petr. Mitth. vol. 14, p. 474.

†*Loc. cit.*



EXPLANATION OF PLATE XLV.

Map showing location of meteorite finds in counties of northwestern Kansas. The numbers in the counties indicate the number of finds. That of Prairie Dog Creek is approximate only.

It is important that the meteorite finds in northwestern Kansas be correctly located. Many specimens of meteorites are found in the same place, and it is important that the location of the finds be correctly located. The finds are located in the following places: One find is located in the northwestern part of the State, near the border of the State of Kansas. Another find is located in the northwestern part of the State, near the border of the State of Kansas. A third find is located in the northwestern part of the State, near the border of the State of Kansas. A fourth find is located in the northwestern part of the State, near the border of the State of Kansas. A fifth find is located in the northwestern part of the State, near the border of the State of Kansas. A sixth find is located in the northwestern part of the State, near the border of the State of Kansas. A seventh find is located in the northwestern part of the State, near the border of the State of Kansas. An eighth find is located in the northwestern part of the State, near the border of the State of Kansas. A ninth find is located in the northwestern part of the State, near the border of the State of Kansas. A tenth find is located in the northwestern part of the State, near the border of the State of Kansas.

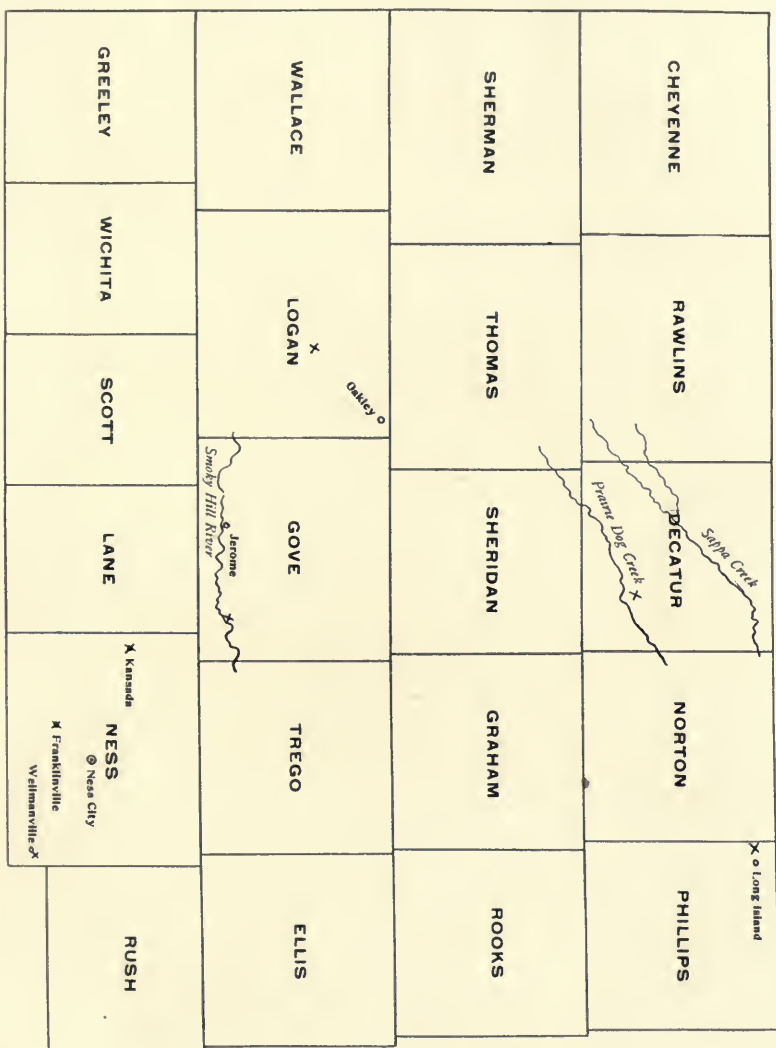
The first find is located in the northwestern part of the State, near the border of the State of Kansas. The second find is located in the northwestern part of the State, near the border of the State of Kansas. The third find is located in the northwestern part of the State, near the border of the State of Kansas. The fourth find is located in the northwestern part of the State, near the border of the State of Kansas. The fifth find is located in the northwestern part of the State, near the border of the State of Kansas. The sixth find is located in the northwestern part of the State, near the border of the State of Kansas. The seventh find is located in the northwestern part of the State, near the border of the State of Kansas. The eighth find is located in the northwestern part of the State, near the border of the State of Kansas. The ninth find is located in the northwestern part of the State, near the border of the State of Kansas. The tenth find is located in the northwestern part of the State, near the border of the State of Kansas.

THE METEORITE FINDS IN NORTHWESTERN KANSAS. EXPLANATION OF PLATE XLV. The first find is located in the northwestern part of the State, near the border of the State of Kansas. The second find is located in the northwestern part of the State, near the border of the State of Kansas. The third find is located in the northwestern part of the State, near the border of the State of Kansas. The fourth find is located in the northwestern part of the State, near the border of the State of Kansas. The fifth find is located in the northwestern part of the State, near the border of the State of Kansas. The sixth find is located in the northwestern part of the State, near the border of the State of Kansas. The seventh find is located in the northwestern part of the State, near the border of the State of Kansas. The eighth find is located in the northwestern part of the State, near the border of the State of Kansas. The ninth find is located in the northwestern part of the State, near the border of the State of Kansas. The tenth find is located in the northwestern part of the State, near the border of the State of Kansas.

Map showing location of meteorite finds in counties of northwestern Kansas. X marks location of finds. That of Prairie Dog Creek is approximate only.

The map shows the location of meteorite finds in the counties of northwestern Kansas. The finds are marked with an 'X'. The find at Prairie Dog Creek is marked with an 'X' and is approximate only. The find at the other locations is marked with an 'X' and is exact. The map shows the following counties: Adams, Baker, Barber, Brown, Butler, Chase, Cheyenne, Clark, Clay, Coffey, Cowley, Crawford, Decatur, Dickinson, Edwards, Ellis, Franklin, Fulton, Geary, Grant, Gray, Greenwood, Hamilton, Harper, Harvey, Haskell, Howard, Johnson, Jones, Kearney, Keith, Kiowa, Labette, LeFlore, Lincoln, Logan, Linn, Lyon, Marshall, McPherson, Merrick, Morton, Murray, Nemaha, Ness, Norton, Osage, Ottawa, Pawnee, Perkins, Pottawatomie, Pratt, Rawlins, Richardson, Riley, Rock, Rush, Scott, Shawnee, Sherman, Smith, Stafford, Starnes, Stevens, Sumner, Trego, Turner, Union, Updegraff, Wallace, Warren, Washington, Wagoner, Weatherford, Welch, Wheat, Winfield, Woodson, Woods, Wyandott, Yates, and Zeigler.

Through the kindness of the American Museum of Natural History, the following specimens of the meteorite finds in northwestern Kansas have been secured: One specimen from the find at the northwestern part of the State, near the border of the State of Kansas. Another specimen from the find at the northwestern part of the State, near the border of the State of Kansas. A third specimen from the find at the northwestern part of the State, near the border of the State of Kansas. A fourth specimen from the find at the northwestern part of the State, near the border of the State of Kansas. A fifth specimen from the find at the northwestern part of the State, near the border of the State of Kansas. A sixth specimen from the find at the northwestern part of the State, near the border of the State of Kansas. A seventh specimen from the find at the northwestern part of the State, near the border of the State of Kansas. An eighth specimen from the find at the northwestern part of the State, near the border of the State of Kansas. A ninth specimen from the find at the northwestern part of the State, near the border of the State of Kansas. A tenth specimen from the find at the northwestern part of the State, near the border of the State of Kansas.



0 5 10 20 30 40 50
SCALE OF MILES.

LIBRARY
UNIVERSITY OF ILLINOIS
URBANA

other falls. Its structure is much more highly chondritic than that of either of the above, and the peculiarities of the chondri, which have been so fully described by Washington that they need not here be again enumerated, render them unique. There remain then only Kansada and Wellmanville to be compared as to structure with the other finds. Regarding these two, however, no further data can at present be obtained. No details as to their intimate structure have been published and I do not know the present whereabouts of the stones. It would not be surprising, when an opportunity for comparison presents itself, to find that Kansada could with good reason be connected with either Jerome or Franklinville and Wellmanville with Franklinville. Still, each might prove to be a separate fall, for as may be noted, there is no inherent improbability in supposing falls to take place within a short distance of each other at different times. The falls of Homestead and Hartford, Iowa, were, for instance, separated only about thirty miles and the character of the stones was not very different. The interval of time was twenty-eight years. Castine and Searsmont were separated by only about twenty miles in distance and twenty-three years in time. These are quite similar stones. The Estherville and Forest City falls were distant not over sixty miles from each other and took place within an interval of eleven years. Here, however, the character of the stones was quite different. Doubtless many other instances of falls approaching near each other in space and time could be found by searching. The citing of even the above is, however, sufficient to lead one to the conviction that classing together into one fall meteorites found in different localities is a work that should be performed with caution.

TOLUCA (LOS REYES), MEXICO, D. F.

MUSEUM No. Me. 454.

This meteorite was obtained for the Museum in the spring of 1897 from Mr. E. O. Matthews of the City of Mexico. It was brought him by some native Mexicans or peons who reported that they had found it some months before, at Los Reyes, while ploughing. This is all the evidence obtainable regarding the manner of its discovery. The meteorite is of the metallic variety (aërosiderite) and is a complete individual. Its weight entire is 43 pounds (19.5 kilos). Its form (illustrated by the accompanying cuts, Plate XLVI), is roughly that of a steep triangular pyramid whose greatest length is 24 cm. (9½ inches), and greatest width 15 cm. (6 inches). The sides of the pyramid are

deeply hollowed and rounded so that the contours of the mass are curved, and at one of the edges it extends out in the form of a thin wing. On one side near the base are two especially deep and well-marked pits side by side, one somewhat conical in shape, the other broadly concave. The diameter of the conical pit is about 45 mm. ($1\frac{3}{4}$ inches) and its depth 20 mm. ($\frac{3}{4}$ of an inch). The concave pit is about 63 mm. ($2\frac{1}{2}$ inches) in diameter and 12 mm. ($\frac{1}{2}$ of an inch) deep. These pits (fully shown in Plate XLVI) probably mark areas of schreibersite which were fused out during the passage of the meteorite to the earth. The surface of the meteorite is of a uniform dark brown color from oxidation, but the depth to which oxidation has penetrated is very slight, as the merest scratch with a file reveals the nickel-white color of the interior. The meteorite is not of the "sweating" variety and exhibits no tendency to further alteration.



FIG. 4. Etched surface of Toluca (Los Reyes) meteorite, showing character of Widmanstätten figures. $\times 2$.

Its substance is tough and malleable to a high degree. It is medium hard, cutting with some difficulty with a hack-saw. It takes a good polish, a polished surface being of silver-white to nickel-white color. Relative to copper sulphate the meteorite is active.

The iron has not been sliced, but a triangular area 63 mm. \times 25 mm. ($2\frac{1}{2}$ inches \times 1 inch) was made smooth and etched with nitric acid. The surface etched easily and exhibited well-marked Widmanstätten figures which are shown in Fig. 4. Two other smaller surfaces were also etched on other portions of the meteorite. The figures of the meteorite show that it is to be classed with Brezina's group 46 (Octahedrite with lamellæ of medium width) or Meunier's group 7 (Arvaite). The bands of the etching figures are not of uniform



EXPLANATION OF PLATE XLVI.

Front and side views of *Toluides* (Los Reyes) *interstitis* X14.





FIG. 1.

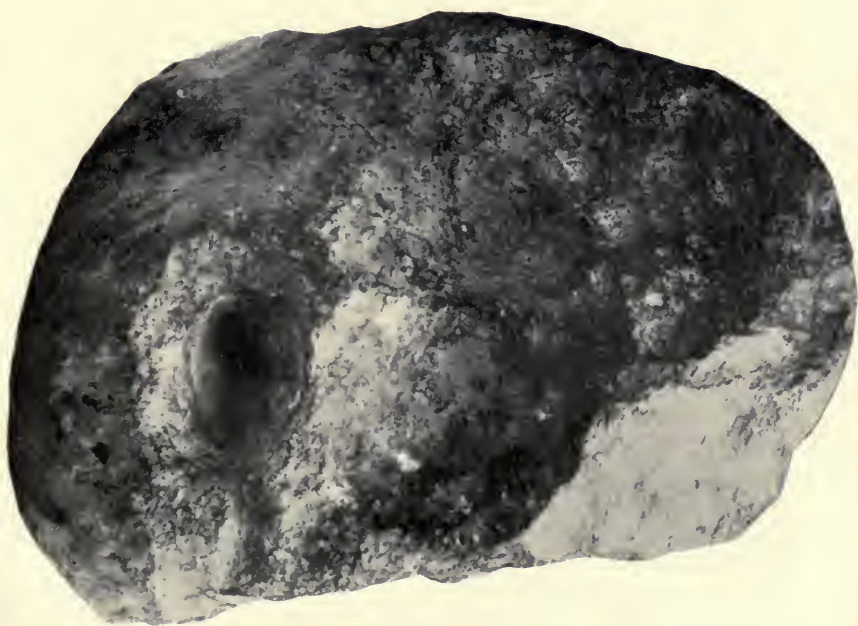


FIG. 2.

LIBRARY
UNIVERSITY OF ILLINOIS
URBANA

width nor do they extend continuously for any great distance. They are of the type described by German writers as "*wulstige*" (swollen). The longest one on the etched surface figured accompanying is 11 mm. ($\frac{5}{8}$) of an inch in length and its contour is very irregular. Only the two alloys kamacite and tænite seem to be present. The former is iron gray in color and occasionally has a well-marked granular structure. The latter, filling the areas between the kamacite bands, is now more or less ribbon-like and now occurs in curvilinear areas. Much of it appears connected through the section, giving the impression of a network in which the kamacite is imbedded. It shades to a bronze color as contrasted with the iron gray of the kamacite and is left standing in relief by the etching. Under the lens its surface appears very rough, the etching of the acid acting upon it more irregularly than upon the kamacite. The only other mineral appearing in abundance in the meteorite is schreibersite, which occurs in long narrow bands or in irregular star-like forms. These areas are bounded by kamacite (swathing kamacite). Decomposition has taken place usually along the schreibersite bands, and these decomposed areas appear as dark marks on the etched surface.

Troilite seems to be almost entirely absent from the meteorite. Only two minute nodules are to be seen on the surfaces which have been etched and the percentage of sulphur obtained by analysis corresponds to a content of only 0.07%. The presence of cohenite is indicated by the carbon found by analysis, but it was not observed on the etched surfaces.

An analysis of the meteorite was made by Mr. H. W. Nichols, the methods employed being briefly as follows: Material for the analysis was secured by a boring made with a $\frac{1}{4}$ -inch drill. The amount of substance used was 2.4353 grams. In order to prevent loss of sulphur and phosphorus the borings were placed in a flask and first treated with fuming nitric acid, to which they remained passive, and then hydrochloric acid was gradually added cold until solution was complete. Sulphur was weighed as barium sulphate. Phosphorus was determined by Eggertz's method as phosphomolybdate, the quantity being too small to allow of a magnesium pyrophosphate determination. Iron was separated by one ammonia and three basic acetate and one final ammonia precipitation. Manganese was separated by the sodium acetate method. Copper, cobalt and nickel were precipitated as sulphides in acetic acid solution, cobalt and nickel separated by potassium nitrite and all weighed from electrolytic deposition. Carbon was determined in an independent sample by oxidation in chromic acid after the method described by Blair.*

*The Chemical Analysis of Iron, 3rd edition, p. 136.

The analysis gave the following results:

Fe	90.56
Ni	7.71
Co	1.07
Cu	0.14
Mn	Trace
P	0.24
C	0.01
S	0.025
Si	0.006
Insol.	0.09
	<hr/>
	99.85

Omitting silicon and insoluble matter the analysis indicates that the meteorite has the following mineralogical composition:

Nickel-iron (Fe, Ni, Co, Cu, Mn.)	97.98
Schreibersite	1.55
Cohenite	0.15
Troilite	0.07
	<hr/>
	99.75

As the locality where the meteorite was found may be said in a certain sense to be in the vicinity of Toluca, it becomes an important question from the standpoint of the collector to determine whether the specimen is to be regarded a portion of the Toluca fall. Los Reyes is about forty miles (sixty-two kilometers) in a direct line east of Toluca. It is the little station at the southern end of Lake Texcoco where the Morelos division of the Interoceanic Railway joins the main line, about twelve miles southeast of the City of Mexico. On the same line of railroad twenty-five miles from the City of Mexico is the town of Ameca-Ameca, where the find of another iron meteorite has been reported by Castillo.* Castillo classes this iron with the Toluca meteorites,† and describes the “zone” of Toluca meteorites as extending from Ameca-Ameca on the east to Xiquipilco in the valley of Toluca [on the west]. If Castillo is right in this conclusion the Los Reyes meteorite comes within this zone, as Los Reyes is some fifteen miles (twenty-three kilometers) nearer Toluca than Ameca-Ameca. Castillo unfortunately gives no description of the Ameca-Ameca meteorite by which its resemblance or otherwise to the known specimens from Toluca can be determined. He simply describes it as a “small nodule of meteoric iron found in the village [of

*Catalogue Descriptif des Meteorites du Mexique, Paris, 1889, p. 3.

† *Op. cit.*, p. 11.

that name] and now preserved in the National Museum of Mexico." If it is correct thus to group the Ameca-Ameca meteorite (and hence Los Reyes) with Toluca, a distribution of fifty or sixty miles at least must be conceded to this fall, Ixtlahuaca and Xiquipilco, the two localities in the Valley of Toluca where many of the Toluca meteorites are found, being ten miles farther from Ameca-Ameca than Toluca itself. It will be remembered that Fletcher, after a careful study of Mexican meteorites with especial regard to the supposed occurrence of widespread meteoritic showers,* reached a negative conclusion as regards the wide extent of such showers, this opinion being similar to one in regard to such showers in general which he had expressed in an earlier paper.† According to Fletcher the distribution of the Toluca meteorites as they have been reported from localities distant from Toluca was probably due to human agency. With reference to the Ameca-Ameca meteorite he states that "Ameca-Ameca is a town where there are now iron foundries, and where ploughs, castings, smoothing irons, mill wheels and other articles are manufactured," to show that Toluca iron might have been carried there for manufacturing purposes. With regard to this report of the state of manufacturing enterprises in Ameca-Ameca I fear that the distinguished authority of the British Museum has been misinformed, for I have spent weary days in the town without having learned of the existence of such industry.

The fact brought out by Fletcher to the effect that no *known* meteorite shower has a greater distribution than sixteen miles is a more important one in the study of this case, and the evidence at hand in this instance is hardly sufficient to enable us to assert that the Toluca shower had a wider extent.

The meteorite may of course have reached Los Reyes by the agency of man, but on the whole the indications are that it fell where it was found. The statements of the finders were plain and simple, the meteorite bears no marks showing any attempt to use it for economic purposes, and the price at which it was purchased was lower than any one who had brought it from Toluca would probably have sold it for. If the iron fell where it was found it is important to determine whether it was an independent fall or whether its resemblance to known Toluca irons is sufficient to make it probable that it fell at the time of the Toluca shower. Here again no positive evidence is at hand, but the chances are, in my opinion, in favor of the latter conclusion. The meteorite certainly does not differ sufficiently from known Toluca irons so that its independent origin can be asserted,

*Mineralogical Magazine, vol. IX, No. 42, pp. 91-179.

†Mineralogical Magazine, vol. VIII, p. 225.

and on the whole it resembles them considerably. Published analyses of Toluca irons give percentages varying somewhat widely, within which limits the Los Reyes values may certainly be included. For purposes of comparison of analyses, several that have been made of Toluca irons by different authorities are given below:

1. Taylor, American Jour. Sci., 3d ser. XXII. 374. 1856.
- 2 and 3. Pugh, Annal. der Chem. and Pharm. XCVII. 385. 1856.
4. Nason, Jour. Prakt. Chemie. LXXI. 123. 1857.

	Fe	Ni	Co	Cu	Mn	S	C	P	X	
1.	90.72	8.49	0.44	0.18	0.63 =	100.46
2.	90.74	7.78	0.72	0.03	0.03	0.24	Insol. residue. X	99.88
3.	87.89	<u>9.06</u>	<u>1.07</u>	0.20	0.62	0.22 =	99.06
4.	90.133	<u>7.241</u>		Tr.	0.376	2.225 =	99.975
Los Reyes	90.56	7.71	1.07	0.14	Tr.	0.025	0.01	0.24	Insol. residue.	99.85

The resemblance in chemical composition to the average of Toluca irons is thus seen to be close. Further, the etching figures come within the limits found in Toluca irons, since these vary considerably in detail as is well known. The meteorite will be designated, therefore, as Toluca (Los Reyes).

HOPEWELL MOUNDS, ROSS COUNTY, OHIO.

MUSEUM No. Me. 480.

Among the objects obtained from the Hopewell Mounds of Ohio, and now in the Anthropological collections of this Museum, are a number made of iron. These include a part of a head and ear ornament, some celts, a number of beads, and lastly a small unwrought mass weighing about 130 grams (5 ounces). Dr. G. A. Dorsey, to whom I am indebted for calling my attention to them, informs me that they were all found associated with a single human skeleton near an altar of one of the mounds. They were considerably oxidized, so that the original metal is in most cases obliterated, but the unwrought mass above mentioned was found to be oxidized only on the surface. A quali-

tative analysis of some filings from this mass showed the presence of nickel and indicated, as might be expected since no other source of iron probably lay open to the Mound Builders, that the objects were made of meteoric iron. Upon removing the rust from one surface and submitting the area so exposed to the etching action of nitric acid, the meteoric nature of the iron was proved beyond question by



FIG. 5. Outline of Hopewell Mounds meteorite, with etched portions showing curving of the Widmanstätten figures, probably due to heating and hammering that the mass has received. $\times \frac{1}{2}$.

the appearance of Widmanstätten figures. The nature of these figures is shown in Figs. 5 and 6, where the structure of bands of kamacite separated by thin ribbons of taenite can be plainly discerned. The width and continuity of the kamacite bands varies considerably. Some are at least a millimeter in width and from these they grade down to not over twice the width of the corresponding taenite ribbon. While many are continuous in a general way for a length of from 10 to 20 millimeters, the taenite runs through them all in a series of anastomosing branches and in places gives the impres-

sion of a network in which grains of kamacite are imbedded. The contour of the figures is for the most part curved and wavy, especially near the borders of the section. The most reasonable explanation for this seems to be the treatment probably given the mass by the ancient workmen. If heated until it became somewhat plastic and then hammered, just such curving of the plates might be produced. Owing to the distortion of the figures it is impossible to positively classify the iron. Apparently it is an octahedral iron having lamellæ of medium width. While two alloys, kamacite and tænite, are plainly discernible, no troilite or schreibersite can be seen,

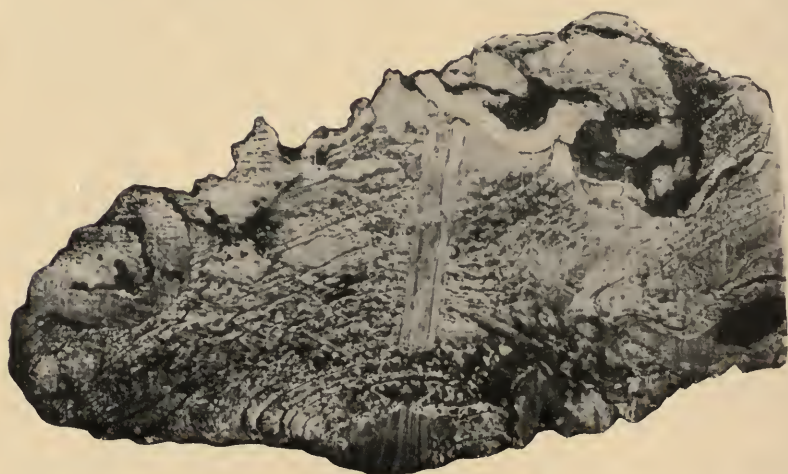


FIG. 6. Etched surface of Hopewell Mounds meteorite showing Widmanstätten figures curved and interwoven, probably on account of heating and hammering that the mass has received. $\times \frac{1}{2}$.

although the presence of the two latter is indicated by the percentages of sulphur and phosphorus found on analysis. At one end of the mass are three large irregular pores such as might have been produced by the falling out of crystals of chrysolite or other stony matter. There is no other evidence, however, that such stony matter was at one time present and the cavities may have been produced in a purely mechanical way. This seems rather the more probable from the fact that the rest of the mass is quite compact. The iron is rather soft, cutting easily with a hack-saw, and malleable. It is active to copper sulphate.

For purposes of quantitative analysis a small piece was sawed from one end of the mass and cleaned from rust by filing and scraping.

The analysis, made by Mr. H. W. Nichols, and using the methods noted above for the Los Reyes meteorite, gave the following results:

Amount of substance taken, 2,166.3 grams.

Fe	95.20
Ni	4.64
Co	0.404
Cu	0.035
Mn	trace
Sn	trace
S	0.13
P	0.07
												100.48

The other meteorites known to have been found in Indian mounds of this country are those of Octibbeha County, Mississippi, and the Turner Mounds, Ohio. In the Octibbeha County iron the quantity of nickel reaches 59.7%, and this sufficiently distinguishes it from any other known meteorite. The Turner Mound meteorites include masses from two different mounds, which were analyzed by Kinnicutt* with the following results:

	FROM MOUND NO. 3.		FROM MOUND NO. 4.
	1.	2.	
Fe	86.66	88.37	89.00
Ni	12.67	10.90	10.65
Co	0.33	0.44	0.45

It will be remembered that Kunz concluded from a comparison of the Turner Mounds meteorites with those of Kiowa County, Kansas, that on account of the marked similarity in constitution and structure they belonged to the same fall.* The Hopewell Mounds are only about seventy-five miles distant from the Turner Mounds in an easterly direction, and it might be expected that the same meteoric iron would have been used for the construction of the objects found in these mounds. The results of the analysis above given do not, however, permit this conclusion, the differences in the percentages being greater than are known to occur among the individuals of a single fall. Comparison of etching figures is out of the question on account of the distortion of those of the Hopewell Mounds specimen, but the lack of any content of chrysolite such as characterizes the Turner Mounds

*Reports Peabody Museum of Archaeology, vol. 3, p. 382, *et seq.*

*American Journal of Science, 3rd series, vol. 40, pp. 316-318.

masses is a further point of difference. It seems impossible at present therefore to connect the Hopewell Mounds mass with any known meteorite and the specimen will therefore be designated as the Hopewell Mounds meteorite.

TAENITE FROM THE KENTON COUNTY METEORITE.

One of the sections of the Kenton County, Kentucky, meteorite in the Museum collection (Museum No. Me. 134), tends to decompose along the planes of structure marked by the Widmanstätten figures. The result of this decomposition is a separation of the mass into fragments bounded by octahedral planes, of a homogeneous alloy of iron-gray color between which lie thin, elastic plates of a tin-white color. The first alloy is undoubtedly kamacite, the second taenite. In order to compare this taenite with that known from other meteorites, some study of it was made. The fragments which it was possible to separate rarely exceeded four square millimeters in surface. As plates, they were thin, elastic and magnetic. The only feature noted regarding their surface was that it is often marked by parallel rows of minute ridges extending across the plate. Corresponding striations usually appear on the adjacent kamacite. The plates are soluble in copper ammonium chloride, and fusible with difficulty B.B.

In separating plates for analysis care was taken to use only those which could be completely isolated and showed no rust. This proved a laborious operation, and after considerable toil the amount that could be secured for analysis was only 0.022 grams. The analysis was made by Mr. H. W. Nichols. Iron was determined by titration with an $n/100$ potassium bichromate solution, and cobalt and nickel isolated by means of two ammonia and three basic acetate separations and then precipitated electrolytically.

While the extremely small amount used for analysis makes the chances of error larger than is desirable, it is believed that fairly accurate results were attained.

The analysis gave:

Fe	80.3
Ni and Co	19.6
	<hr/>
	99.9

This corresponds nearly to the formula $\text{Fe}_{13} \text{Ni}_3$, the percentages for such a compound being:

Fe	80.5
Ni and Co	19.5
	<hr/>
	100.00

Other analysts have obtained for the percentages of iron in taenite from other meteorites, values ranging from 86.44% to 57.18%, and corresponding to formulas varying from $\text{Fe}_6 \text{Ni}$ to $\text{Fe}_4 \text{Ni}_3$. Judging from our present knowledge of alloys it is hardly to be expected that taenite should have a uniform composition. Kamacite, being the substance with the lowest freezing point, is to be considered the eutectic of the series and as such has a fairly uniform composition, but this would not be expected of the other alloy or alloys.

INDEX.

	Page		Page
Acoustic phenomena of falling meteorites.....	9, 11, 14	Analysis of—tænite.....	314
Aërolites.....	18	Toluca meteorite	308
Analyses.....	25	Analyses of meteorites, quoted	19, 23, 25, 310, 313
Classes.....	24	Anchitherium.....	185
Definition.....	18	Andesite, Amphibole, of Ixtac-	
Description.....	23	huatl.....	119
Aërosiderites.....	18	Hypersthene, of Popocatepetl	100
Analyses.....	19	Anori, History of	138
Definition.....	18	Mining District of.....	131, 138
Description.....	18, 22	Antioquia, Department of.....	130
Aërosiderolites.....	18	District of, West.....	141
Analyses.....	23	Mining districts and ores of..	130
Definition.....	22	Anza, Mining District of.....	131, 141, 142
Description.....	18	Aragonite.....	249, 254
Agates, Theory of formation of...	197	Arsenopyrite, in needle form....	147
Age of the "Pillar of the Consti-		Ascent of—Ixtacchiuatl.....	104, 105
tution"	254	Popocatepetl	82
Allen, J. A., quoted.....	200	Asiderites.....	18, 23
Almy, John D., Communications		Astrocœnia conica.....	215
with.....	221	Awaruite	19
Altitude of Ixtacchiuatl, various		Atlantosaurus.....	281
determinations of	107	Baker, Frank C., quoted..	86, 105, 111
snow line on Popocatepetl...	92	Ball, S. H.....	181
Popocatepetl, Various deter-		Bats, Distribution of in caves....	148
minations of.....	87	Becker, G. F., quoted	265
Altitudes near the Ranch of Tla-		Bibliography—of Geology of Co-	
macas.....	90	lombia.....	174
Amagá, Iron mining District of	131, 143	of Popocatepetl and Ixtac-	
Town of.....	143	huatl	73
Amalfi, Mining District of....	131, 137	Biela's Comet.....	29, 30
City of.....	137	Bird Remains	199
Ameca, Town of	78, 308	Anatidæ.....	198
Ameca-Ameca, same as Ameca.		Fringillidæ.....	200
Amphoterite.....	24	Gallæ	200
Amyzon shales.....	199	Blatchley, W. S., quoted.....	247, 249,
Anaime, Mercury ores of.....	169	253, 264, 265	
Analysis of—dolomite.....	230	Bradbury, Dr. S. M., Correspon-	
Hopewell Mounds meteorite.	313	dence with	267
inesite.....	223	Breccia from weathering of pyr-	
Long Island meteorite.....	297	rhotite.....	142

	Page		Page
Brongniardite, Occurrence in Colombia of.....	156, 157	Cenotes	248
Brontosaurus	276	Cephalopoda, Development of...	209
Bronzite—of Long Island meteorite	293, 299	Chalcedony.....	195
Ness County meteorite.....	301	Chassignite.....	24
Bryan, Wm. A., quoted.....	198	Cluna River, Mining District of..	165
Bustite.....	24	Chladnite	24
Calcite, Crystal forms of.....	232	Chondri	26
crystals, Coan's Cave.....	265	in Long Island meteorite....	294
" Joplin.....	232	in Ness County ".....	301
" " Differentiation		Chondritic Structure	26
of surface planes of.....	236	Chromite—in Long Island meteorite..	293, 294, 295, 297, 299, 300
crystals, Joplin, etching figures	237	in Ness County meteorite....	302
" " Forms of large		Chrysolite, Absence of.....	313
crystals	233	of Long Island meteorite. 293, 298	
crystals, Joplin, Forms of		of Ness County ".....	301
smaller crystals.....	237	Circular Halls in Wyandotte Cave.	247
crystals, Joplin, Forms of		Form of	247
twinned crystals.....	238	Origin of	247, 248
crystals, Joplin, Localities of		Structure of.....	248
large crystals.....	232	Classes of Meteorites.....	18
crystals, Joplin, Type I... 232, 233		Cleavage in Meteorites.....	22
" " " II... 233,		Coal in Colombia..... 129, 143, 148	
234, 235		Coan's Cave	264
" " " III... 237		Bats in	249
" " " IV... 238		Entrance to.....	264
deposited in quiet and moving		Pool in	265
waters.....	266	Collection of Ores from Colombia	125
Golden.....	229	Collections of Ores, Character of	
twins, Joplin.....	238	ideal	126
" Guanajuato.....	240	Collet, —, quoted..... 253, 254	
in stalactites..... 249, 250		Colorado, Grand River Valley of.	267
Camarosaurus.....	280	Colorado ore, defined.....	132
Catalogue of the Meteorite Collection	1	Colombia,	
Caledonite.....	224	General Geology.....	128
Blowpipe reactions of.....	225	Gold production	125
Crystal forms of.....	225	Mines of	121
Occurrence of.....	224	Ores of	121
Capillary attraction, Influence of		Physical features of.....	128
on forms of stalactites.....	251	state of geological science in.	125
Caramantá, Mining District of. 132, 151		Como Beds..... 267, 271, 276, 279	
Carbonaceous meteorites..... 17, 27		Compounds in meteorites.....	17
Castillo, Antonio, quoted	308	Contributions to the Palæontology	
Cauca, Mines of..... 127, 153, 155, 157		of the Upper Cretaceous Series	205
Cave Hill Cemetery, Marengo		Cope, E. D., quoted.. 181, 183, 185,	
Cave	257	200, 281	
Caves, Observations on Indiana..	247	Copper Ores in Colombia.... 141, 169	
		Crater of Popocatepetl.. 94, 95, 96,	97
		Dimensions of.....	96

	Page		Page
Crystal Cave, Joplin, Mo.	234	Etching figures on Calcite....	236, 237
Crystal forms of—		of Meteorites	20, 21, 306, 311
calcite	229, 232	Eucastor	184
caledonite	225	Eutectic of meteorites.....	315
epsomite.....	228	Farrington, O. C., author.	
gay-lussite.....	227	Crystal forms of Calcite....	232
inesite.....	221	Fossil Egg from South Dak..	193
Crystalline structure of meteorites		Handbook and Catalogue of	
19, 21, 293, 295, 301		the Meteorite Collection...	1
Crystals, experiments on growth		Meteorite Studies, I.....	283
of.....	265	New Mineral Occurrences...	221
Crystals from quiet and moving		Observations on Indiana	
water, Characters of.....	266	Caves	247
Crust of Meteorites.....	1	Observations on Popocatepetl	
Long Island Meteorite.....	289	and Ixtacihuatl.	
Ness County Meteorite.....	300	Fasciolaria.....	214
Dakota group of the Grand River		Felix and Lenk, on Ixtacihuatl..	104
Valley	270	on Popocatepetl.....	83
Davison, J. M., quoted.....	20	Fissure systems, Wyandotte Cave	248
"Diamond Dome," Marengo		Fletcher, L., quoted.....	3, 309
Cave.	259	Flos Ferri, Origin of.....	249
Dinosaur Beds of the Grand River		Foote, H. W., quoted	251
Valley	267	Fore Leg and Pectoral Girdle of	
Diogenite	24	Morosaurus.....	275
Distribution of—Bats in caves 248,	249	"Fortress Monroe," Marengo Cave	257
Meteorites.....	12	Fossil Birds	199
Sciuromorph rodents.....	187	Anatidæ.....	198
Dolomite, California.....	231	Fringillidæ.....	200
used as Indian money.....	230	Gallæ	200
Dome-shaped Halls in Caves. 247,	253	Fossil Egg.....	193
Form of.....	247	Origin.....	197
Origin of.....	247	Resemblance to those of Ana-	
Structure of.....	248	tine Birds.....	198
Dorsey, G. A., On Mines in Co-		Fossils of the Grand River Valley	272
lombia	127	Upper Cretaceous Series....	205
quoted	230, 310	Fossil wood, Organic Matter in...	195
Dunite	24	Franklinville meteorite.. 302, 303,	304
Dust spouts in Mexico.....	87	Frias Mine of Guayabal.....	163
Echandia, Mining District of....	153	Mining District of.....	163
Effects of heat on meteorites	16	Frontino, Mining District of.. 131,	141
Egg, Fossil.....	193	Fusus	215
Measurement of modern.....	199	Gamba, F. Pereira, on Colombian	
Elements in meteorites.....	16	Ores	125
Elliott, D. G., quoted.....	260	Gay-Lussite	226
Epsomite.....	228	Crystal Forms of.....	227
Eroded stalactites in Shiloh Cave	262	General conclusions upon the	
Erosion in Marengo Cave.....	256	mines and geology of Colombia.	174
Erosive and solvent action of		Gunnison River.....	268
water in caves.....	248	Heddle, H. Forster, quoted.....	197

	Page		Page
"Helen's Dome," Wyandotte Cave	247	La Plata del Libano, Mines of...	165
Heilprin, Angelo, quoted... 80, 106,	111	Leaf Stalactites.....	262
Account of ascent by.....	105	Libano, Mining Districts of.....	165
Heilprin Peak.....	112	Limit of Vegetation on Popoca-	
Hess, Wm. H., quoted.....	249	tepetl.....	92
Holmes, W. H., quoted.....	248	Loaiza Hill, Silver Mines of.....	153
Hovey, H. C., quoted.....	254	Logan, Wm. N., author, Contribu-	
Hyatt, Alpheus, quoted.....	209	tions to the Palæontology of the	
Hystrix refossa.....	183	Upper Cretaceous Series.....	205
Ibague, City of.....	167	Long Island meteorite,	
Mining District of.....	167	Analysis of.....	297
Iddings, J. P., loan of crystals by	232	Catalogue of.....	59
Index to meteorites mentioned in		Description of.....	285
Museum Handbook and Cata-		Occurrence of.....	283
logue.....	62	Los Reyes, Find of meteorite in..	305
Indiana Caves, Observations on..	247	Location of.....	308
Indian Money.....	230	Ludwig and Soret, quoted.....	265
Inesite.....	221	Magdalena River, Geology of....	159
Analysis of.....	222	Mammoth Cave, Rotunda in....	247
Blowpipe reactions of.....	221	Manizales, City of.....	156
Forms of.....	221	Mining District of.....	156
Formula of.....	224	Map of—Antioquia and Tolima..	177
Localities of.....	221	meteorite falls in Northwest-	
Iron Ores, in Colombia.....	143	ern Kansas.....	304
Ixtacilhuatl, Observations on....	67	Popocatepetl and Ixtacilhuatl	120
Glacier on.....	111	Marengo Cave.....	256
Jaguas, defined.....	147	Abundance of stalagmites in	257
Jamesonite.....	148, 150	Floor terrace in.....	256
Jerome meteorite.....	302, 303, 304	Origin of peculiar stalag-	
Joint planes in Long Island me-		mites in.....	257
teorite.....	286	Rate of growth of stalagmites	
Joplin, Mo., Calcite from.....	232	in.....	261
Jurassic Strata of the Grand River		Stalagmo-Stalagmites in....	259
Valley.....	269	Stream deposit in.....	257
Kamacite, Composition of.....	17	Mariquita, Ancient City of.....	159
in Hopewell Mounds meteor-		Marmato, Mining District.....	153
ite.....	311	Marsh, O. C., quoted.....	275
"Kenton County meteorite.	314	Matthews, E. O., Meteorite ob-	
"Toluca meteorite.....	306	tained from.....	305
Nature of.....	20	Measurements of—eggs.....	199
Kansada meteorite.....	302, 303, 304	Morosaurus bones.....	278, 279
Kenton County meteorite, Analy-		Medellin, City of.....	140
sis of taenite from.....	314	Meck, F. W., quoted.....	211
Kermesite.....	152	Meniscomys hippodus.....	183
Knight, Prof. W. C., Communica-		Menke, H. W., Photographs by	
tions from.....	227, 228		191, 267
Kunz, Geo. F., Meteorites pur-		Mercury ores in Colombia.....	169
chased from.....	8, 34	"Mermaid," Marengo Cave.....	259
quoted.....	285	Merrill, G. P., quoted....	249, 251, 254

	Page		Page
Mesogaulus.....	184, 185, 186	Osborn, H. F., quoted.....	276, 281
ballensis.....	181	Ostrea.....	213
monodon.....	181	Distribution of.....	213
sesquipedalis.....	181	beloiti.....	214
Meteorites, Handbook and Cata-		Packard, A. S., quoted....	77, 86, 103
logue of.....	1	Palache, Chas., Communication	
Studies of.....	283	from.....	239
Meunier, S., quoted.....	288, 295, 303	Pamplona, City of.....	170
Milne, Sir Alexander, quoted....	255	Mines of.....	170
"Milroy's Temple," Wyandotte		Peale, A. S., on the Jurassic of the	
Cave.....	247	Gunnison Valley.....	267, 270
Molecular arrangement of stalag-		Pectoral girdle of <i>Morosaurus</i> ...	275
mites and stalactites.....	260	Petrified wood, Organic matter	
Molino ore.....	154	in.....	195
Money, Indian.....	230	Petrography of - Ixtaccihuatl....	119
"Monument Mountain," Wyan-		Long Island meteorite.....	293
dotte Cave.....	248	Ness County meteorite.....	301
Moraine of Porfirio Diaz Glacier.	115	Popocatepetl.....	100
<i>Morosaurus agilis</i>	275	Phylogeny of the <i>Mylogaulidae</i> ..	184
Fore Leg and Pectoral Gir-		Physical features of Colombia....	128
dle of.....	275	Pico del Fraile.....	94, 99
grandis.....	275, 276, 278, 279	"Pillar of the Constitution".....	252
impar.....	275	Age of.....	254
lentus.....	275	Pirsson, L. V., quoted.....	240
robustus.....	275, 280	Pits on meteorites....	13, 289, 300, 306
Morton, Nye F., on the ores of		Po (Indian money).....	231
Antioquia.....	130	Popocatepetl, Ascents of.....	79, 82
"Mount Vesuvius," Marengo Cave	259	83, 84, 85, 86	
<i>Mylogaulidae</i>	181	Description of.....	80
Phylogeny of.....	184	Observations on.....	67
<i>Mylogaulus</i>	181	Porfirio Diaz Glacier.....	111
Ness County Meteorites.....	300	Collecting ground of.....	112
New Mineral Occurrences.....	221	Evidences of former extent	
Nichols, H. W., Analyses by.....	296, 307	of.....	115
313, 314		Middle ground of.....	113
Author, Ores of Colombia....	121	Terminal portion of.....	114
Collections by.....	232	" moraine of.....	115
Experiments by.....	265	Prairie Dog Creek meteorite..	303, 304
Nitrates in cave earths.....	249	Preston, H. L., quoted.....	302
Oakley meteorite.....	303, 304	Prestwich, J., quoted.....	256
Observations on Indiana Caves..	247	Prionotropis <i>woolgari</i>	211
Popocatepetl and Ixtaccihuatl	67	"Prison Cell," Marengo Cave....	257
"Odd Fellow's Hall," Wyandotte		Protogaulus <i>hippodus</i>	183
Cave.....	247	Pseudoperma <i>wilsoni</i>	215
Ores of Colombia.....	121	Pyrargyrite.....	156, 158, 160, 164, 166
Organic matter in fossils.....	195	Quiuna, Gold mine of.....	142
Origin of—stalagmites in Marengo		Randolph, John C., on Colombia	
Cave.....	257	159, 164	
ores in tuff.....	149	Reclus, Elisée, quoted... 143, 160, 173	

	Page		Page
Remedios, City of.....	132	Sierra de Ahualco.....	73, 75
Mining District of.....	131, 132	Route to the Mountains of...	77
Restrepo, Vicente, quoted....	144, 162	Former fauna of.....	76
Riggs, E. S., author, Dinosaur		" glaciation of.....	77
Beds of the Grand River		Time of origin of.....	76
Valley of Colorado.....	267	Lavas of.....	76, 77
Fore Leg and Pectoral Girdle		Sigmogomphius	184
of Morosaurus	275	Slickensides,	
The Mylagaulidae.....	181	in Long Island meteorite....	288
Robertson's Cave.....	258	in meteorites	27
"Rock of Gibraltar," Marengo		Origin of	288
Cave	257	Snow Line, altitude of on Popo-	
Rodents, Distribution of Sciuro-		catepetl	92
morph	187	Soledad, Mining District of....	161
Rothrock, H. A.....	253, 254	Specific gravity,	
"Rothrock's Cathedral," Wyandotte Cave	247	of fossil egg.....	196
"Rotunda," Mammoth Cave....	247	of inesite	223
"Sand Pit," Marengo Cave.....	257	of Long Island meteorite....	292
San Pedro Mining District....	131, 140	of meteorites in general..	19, 23, 26, 39
San Sebastian de la Plata.....	159	of Ness County meteorite....	301
Santa Ana Mine, History of.....	162	Stalactites, Eroded	262
Santana, Mining District of....	163	Leaf.....	262
Santa Rosa de Osos, City of....	139	Molecular arrangement of...	260
Mining District of.....	131, 139	Modified by capillary action.	251
Scaphites.....	207	Vermiform	249
Distribution of.....	207	Stagmalites, Definition of.....	261
nodosus	209	Rate of growth of.....	261
æqualis.....	207	Stalagmites, Abundance of in	
Ontogeny	208	Marengo Cave.....	257
Paleontogeny.....	208	Bermuda.....	255
Phylogeny.....	208	Origin of.....	258
ventricosus	211	Molecular arrangement of...	260
warreni	209	from Robertson's Cave.....	258
" revised and enlarged		Variations in the form of....	258
description of.....	210	Stalagmo-stalactites.....	259
Scheiderz, defined.....	196	Stephanite in Colombia.....	156
Schlemm, W. H.	221	Stibnite in Colombia 151, 152, 158, 161	
Schreibersite	17, 19, 22, 307	Stratigraphy of the Grand River	
Sciurormorph Rodents, Distribu-		Valley	268
tion of.....	187	Stream deposit in Marengo Cave	257
Scott, W. B., quoted.....	181	Subcarboniferous strata in Tolima	129
"Senate Chamber," Marengo		Subcarboniferous limestone from	
Cave.....	247, 248, 252	Santander.....	129
Senft, F., quoted....	249, 250, 254, 257	Sucre, Mining District of.....	161
Shiloh Cave.....	262	Sulphur Mines on Popocatepetl	89, 90
Eroded stalactites in.....	262	Supia, Mining District of.....	155
Leaf stalactites in.....	262	Syenite, Use of the term in Colom-	
Stalagmo-stalagmite from...	259	bia.....	133

	Page		Page
Taenite, Analysis of from Kenton		Volcano of Tolima.....	160
County meteorite	314	Ward's Natural Science Estab-	
Composition of	17, 315	lishment, Meteorites obtained	
Description of	20, 307, 312	from	8, 34
Tellurides of gold in Colombia ..	141	Ward, Henry L., quoted.....	302
Terminal Moraine, Porfirio Diaz		Washington, H. L., Loan of sec-	
Glacier.....	115	tion by	304
Terrace on cave floor	256	quoted	303
Thames, Rate of erosion by	256	"Washington's Monument," Ma-	
Thumbmarks of meteorites.....	14	rengo Cave	258
Titiribi, City of	144	Weinschenk, E., quoted.....	292, 304
Mining District of.....	132, 144	Weller, Stuart	209
Origin of ores of.....	149	Wellmanville meteorite..	303, 304, 305
Tolima, Department of.....	159	Western Antioquia Mining Dis-	
Mining Districts and ores of.	159	tricts.....	131, 141
Volcano of	160	Widmanstätten figures, Descrip-	
Toluca meteorites, Analyses of,		tion of.....	20, 21
quoted	310	of Hopewell Mounds mete-	
Distribution of.....	308	orite	311
Triassic strata of the Grand River		of Toluca meteorite.....	306
Valley	268	Weyman, Henry, on Crystal Cave.	234
Troilite.....	17, 22, 291, 302, 307	White, Robert, on petrography of	
Turner Mounds meteorite, Analy-		Colombia.....	129
ses of, quoted.....	313	Willard, J. T., quoted.....	283
Uncompahgre Plateau	267	Williston, S. W., quoted.....	267, 283
Upper Cretaceous Series, Palæ-		Wyandotte Cave, Circular halls in	247
ontology of.....	205	Distribution of bats in.....	248
Venadillo, Mining District of....	167	Fissure systems of.....	248
Vermiform stalactites.....	130	"Pillar of the Constitution" in	252
Vetas de cajon.....	130, 139	Vermiform stalactites in.....	249
Viviparus.....	272	Zancudo Establishment.....	144, 145
Volcano of Popocatepetl.....	80		





UNIVERSITY OF ILLINOIS-URBANA



3 0112 061063910